

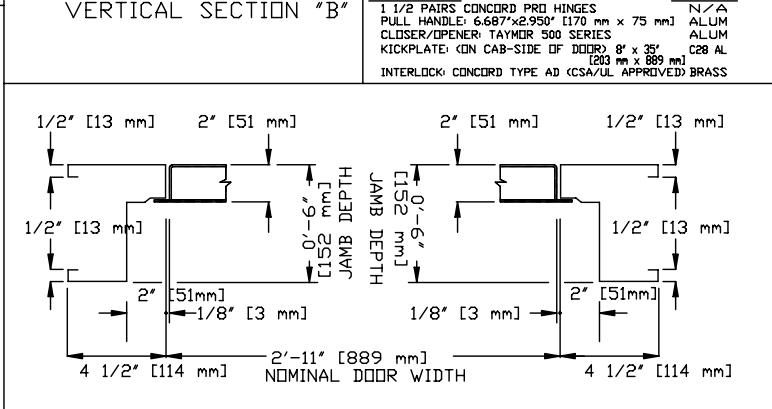
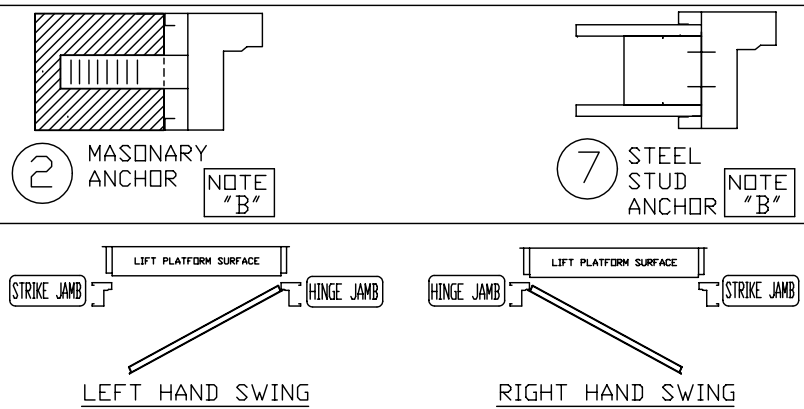
LANDING ENTRANCE SCHEDULE					
*LEVEL #	*ENTRANCE DESIGNATION	*SWING	*FIRE LABEL ANCHOR TYPE	HALL CALL PDS.	COMMENTS
			B/C		
			B/C		
			B/C		
			B/C		
			B/C		

* SEE NOTE C FOR LANDING ENTRANCE SCHEDULE

NOTES:
 A) DRYWALL OR PARGING (BY OTHERS) AS REQ'D.
 B) ANCHOR TYPE 2 & 7 ARE STANDARD & ARE 'BUILT-IN' TO FRAME. THIS COMBINATION MARKED 'C' ON SCHEDULE. COSEE DATASHEET OF THE INSTALLATION DRAWING FOR LANDING ENTRANCE SCHEDULE AND RUNNING CLEARANCE. DUAL INFORMATION IS SUBJECT TO CHANGE. PLEASE REFERENCE OUR ON-LINE DRAWINGS AT www.concordellevator.com FOR THE MOST RECENT UPDATES.

GENERAL SPECIFICATIONS:
 - EACH LANDING ENTRANCE SHALL BE SUPPLIED AS A FINISHED ASSEMBLY WITH DOOR AND FRAME BLANKED, REINFORCED, DRILLED AND TAPPED FOR ALL COMPONENTS DETAILED, READY FOR INSTALLATION.
 - FRAMES SHALL BE 16 GA. FULLY WELDED CONSTRUCTION WITH ALL WELDED JOINTS GROUND TO A SMOOTH, UNIFORM FINISH, SUPPLIED WITH 3 CAPTIVE WALL ANCHORS PER JAMB, TO SUIT WALL CONSTRUCTION.
 - DOORS SHALL BE 18 GA., 2" THICK, SWINGING, FLUSH, STEEL REINFORCED CONSTRUCTION COMPLETE WITH GLASS LITES AS INDICATED.
 - DOORS/FRAMES TO BE FABRICATED FROM ZINC WIFE COATED GALVANIZED STEEL WITH ZINC RICH PRIMER, FACTORY APPLIED TOUCH-UP AT THOSE AREA WHERE COATING HAS BEEN REMOVED DUE TO WELDING/GRINDING.
 - UL/ULC LABELLED ENTRANCES PROVIDED AS INDICATED.

HARDWARE	FINISH
1 1/2 PAIRS CONCORD PRO HINGES	N/A
PULL HANDLE: 6.687" x 2.950" [170 mm x 75 mm]	ALUM
CLOSER/OPENER: TAYMOR 500 SERIES	ALUM
KICKPLATE: (ON CAB-SIDE OF DOOR) 8" x 35" [203 mm x 889 mm]	C28 AL
INTERLOCK: CONCORD TYPE AD (CSA/UL APPROVED) BRASS	



DOCUMENT REVISION 003, DATE: 10/27/08

PRO-MANUAL DOOR, 1.5 HOUR FIRE RATED INSIDE FLUSH DOOR

CUSTOMER:	DATE:
PROJECT:	REVISION:
LOCATION:	COMPLETED BY:

